

NO HAY NADA
NADITA de
NADA 0000

Vengo
Enseguida
ESTOY EN LA
ZONA







NUESTRO



COMANDANTE



INMORTAL



POR FAVOR
NO



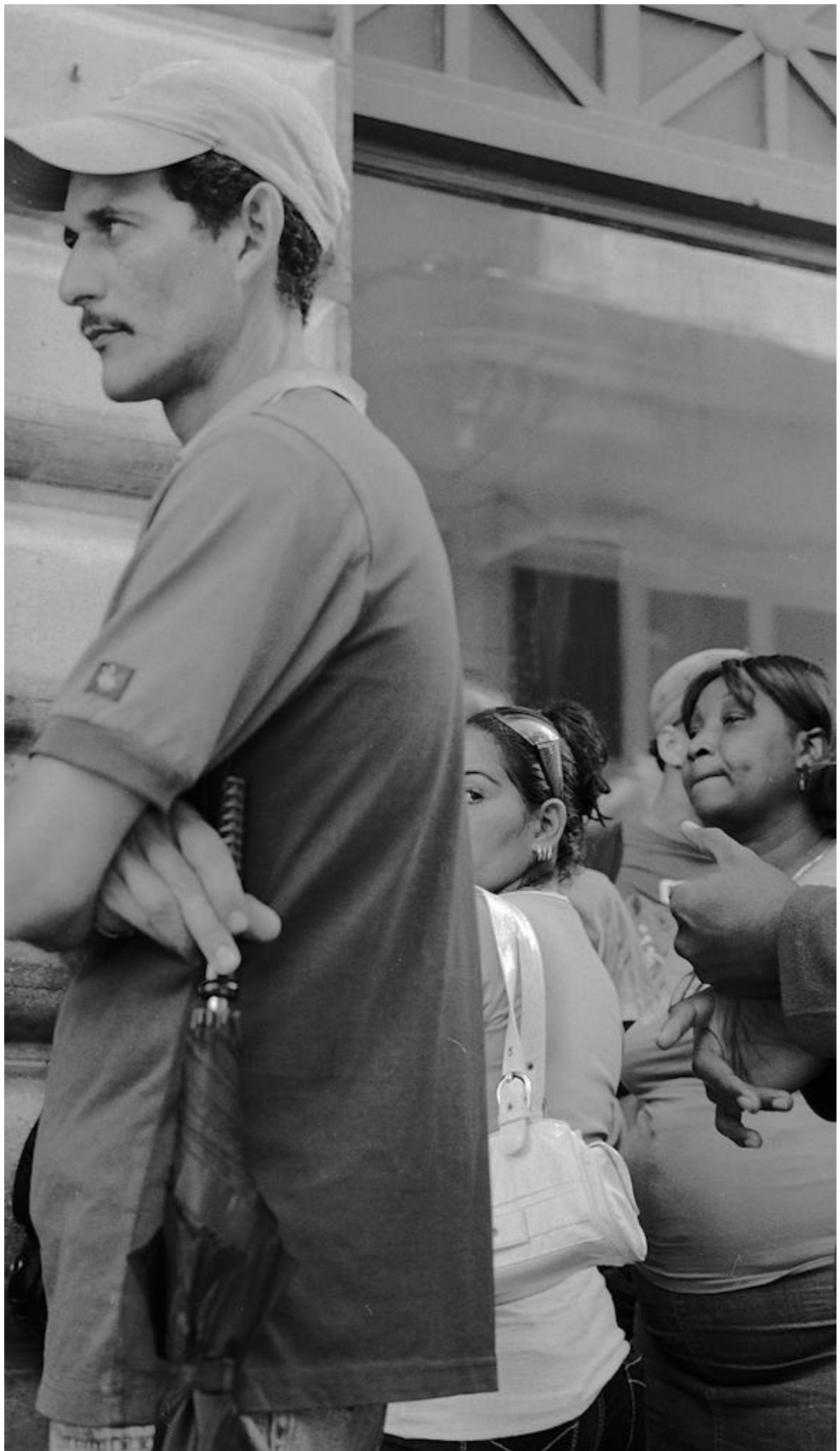




























164

ISMAEL

OK.



















$$E \quad 0 \left(0, \frac{5}{2} \right) \\ r = 3$$

$$\boxed{x^2 + \left(y - \frac{5}{2}\right)^2 = 9}$$

Dist of Vertices $= 2a$

$$F_1(-12, 2) \quad F_2(16, 2)$$

$$2a = 28 \quad 2c =$$

$$(12 - 2) = 10$$

$$(16 - 2) = 14$$

$$(12 - 2) = 10$$

$$(16 - 2) = 14$$

$$(12 - 2) = 10$$

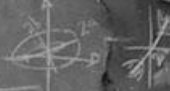
$$(16 - 2) = 14$$

$$a = 14$$

$$c = 10$$

$$c = 10$$

$$c = 10$$



$$\frac{x}{a} - \frac{y - \frac{5}{2}}{b} = \frac{2c}{2a}$$

$$\left(\frac{x}{14}\right) - \frac{y - \frac{5}{2}}{10} = \frac{20}{28}$$

$$\frac{x}{14} - \frac{y - \frac{5}{2}}{10} = \frac{5}{7}$$

$$\frac{x}{14} - \frac{y}{10} + \frac{5}{20} = \frac{5}{7}$$

$$\frac{x}{14} - \frac{y}{10} = \frac{5}{7} - \frac{5}{20}$$

$$\frac{x}{14} - \frac{y}{10} = \frac{100 - 35}{140}$$

$$\frac{x}{14} - \frac{y}{10} = \frac{65}{140}$$

$$\frac{x}{14} - \frac{y}{10} = \frac{13}{28}$$

$$\frac{x}{14} - \frac{y}{10} = \frac{13}{28}$$

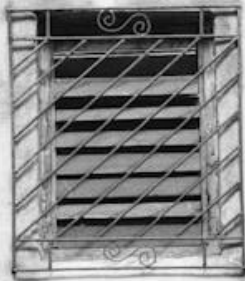
$$\frac{x}{14} - \frac{y}{10} = \frac{13}{28}$$

$$\frac{x}{14} - \frac{y}{10} = \frac{13}{28}$$

$$\frac{x}{14} - \frac{y}{10} = \frac{13}{28}$$



RCA Victor











Campo de Tiro Recreativo
Popular
Asociación de Combatientes de la
Revolución Cubana

PROGRAMA
**Educa
a tu
hijo**



FUNCIONA EN TU LOCALIDAD C.P. PLAZA VIEJA











A DE INFANTIA

UNIDOS
VENCEREMOS

SOMOS



LO

MAXIMO

103

Evah





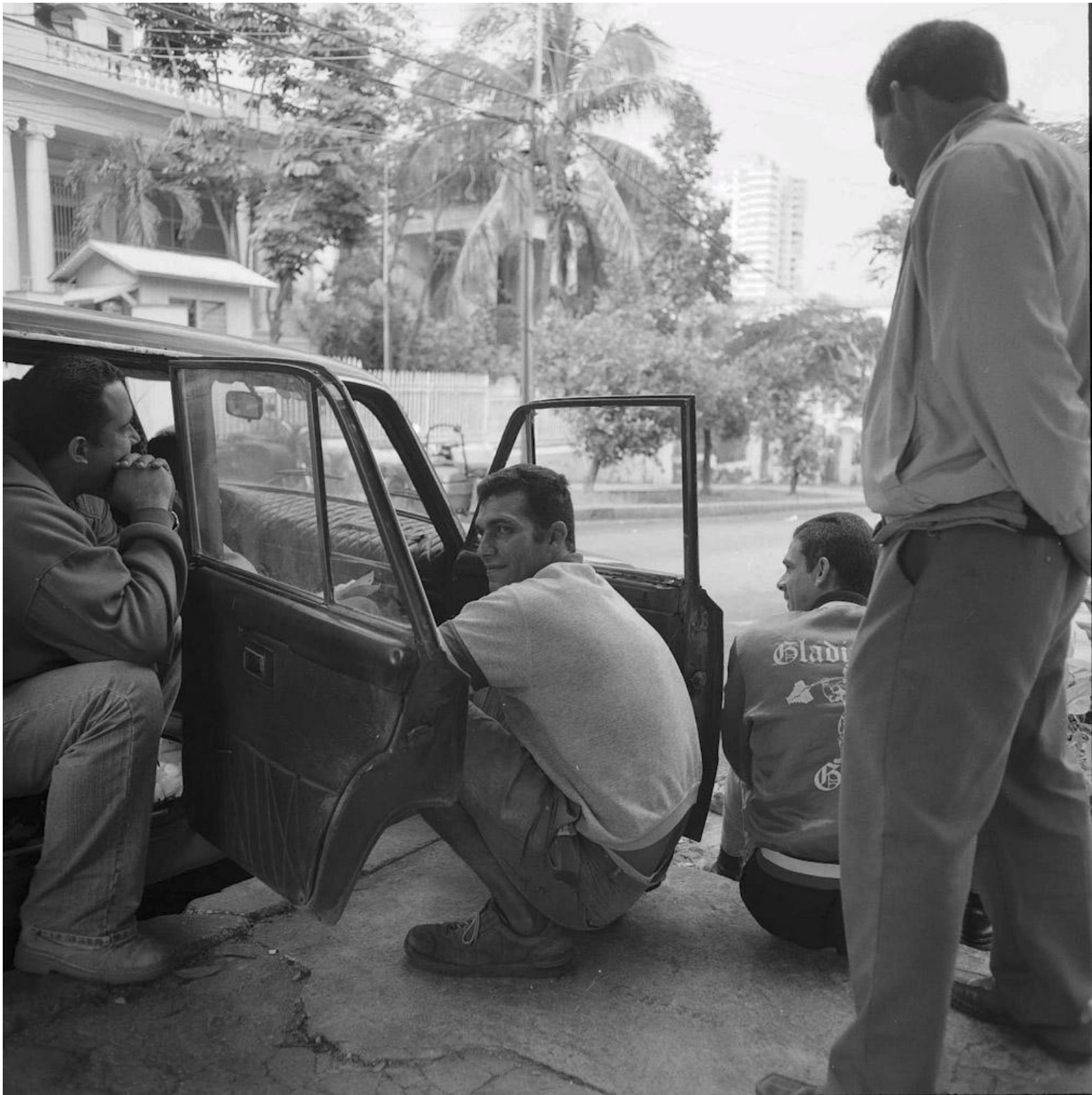
COLECCIONISTAS!
Venta de **DISCOS**
MUSICALES
• LONG PLAYING (33 RPM)
• SINGLES (45 RPM)















































INDONESIA
KABUPATEN
SUKABUMI

INDONESIA
KABUPATEN
SUKABUMI

OSP
NPP



Qumma





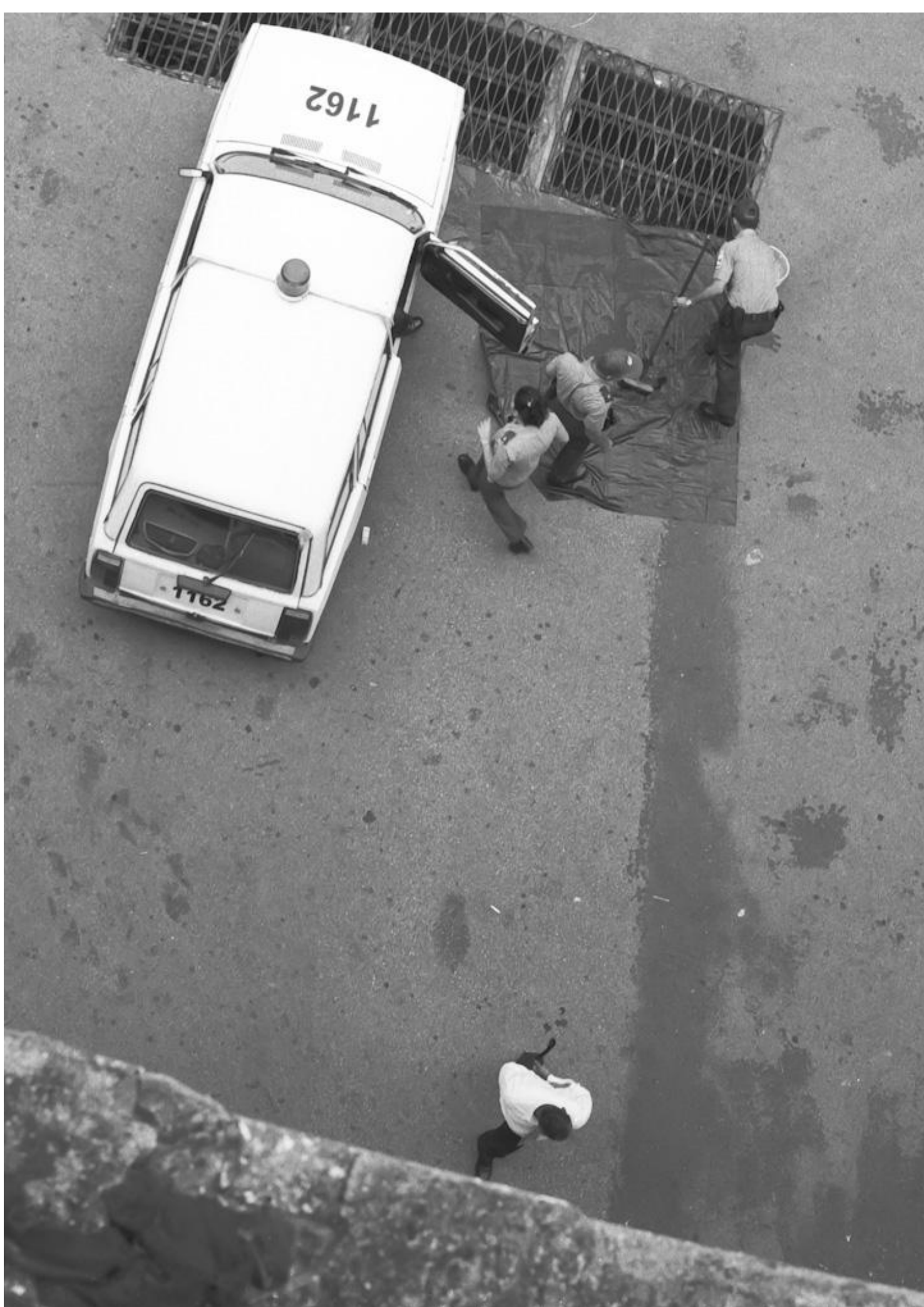




















HOY-MÁS QUE NUNCA-, CUANDO
MADURA NUESTRA OBRA, SON
INDISPENSABLES LA ABNEGACIÓN
Y EL DESINTERÉS.